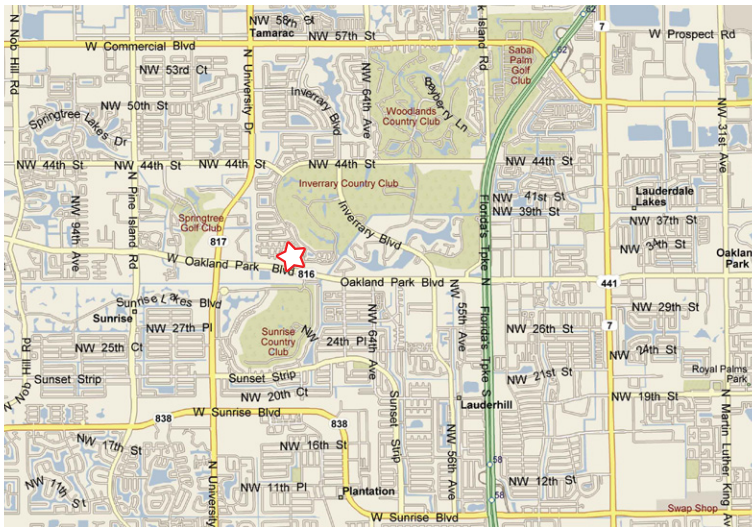


OAKBROOK PLAZA

7121 - 7229 WEST OAKLAND PARK BLVD. | LAUDERHILL, FLORIDA 33313

750 - 3,000 SQ. FT. AVAILABLE



- PRIME OAKLAND PARK LOCATION
- JOIN WALGREENS, DUNKIN DONUTS, KING'S BUFFET, AND THE DRIVER'S LICENSE BUREAU
- GREAT STREET VISIBILITY
- 55,000 V.P.D. ON OAKLAND PARK BLVD.
- BUSY, HIGH-TRAFFIC SHOPPING STRIP
- 1/2 MILE EAST OF UNIVERSITY DRIVE
- IMMEDIATE OCCUPANCY AVAILABLE
- AGGRESSIVE RATES AND FLEXIBLE LANDLORD



MORNING CALM
ADVISORS

FOR MORE INFORMATION

JOSE E. FLEFIL | ASSOCIATE

CELL: (561) 402.3192 | JFLEFIL@MORNING-CALM.COM

OAKBROOK PLAZA



SUITE	TENANT	SIZE (SF)
7139-49	BROWARD COUNTY MEDICAL	7,788
7151	CAFÉ	1,300
7153	JAMAICA EX- POLICE ASSOCIATION	1,500
7155	SILVER IMPACT COUNSELING	1,500
7157	ROYAL FINANCIAL	1,500
7159	7TH HEAVEN READINGS	1,300
7161	TANDY LEATHER FACTORY	1,300
7163	NAIL AND DAY SPA	1,300
7165	AVAILABLE	1,300
7167	AVAILABLE	1,700
7169	ALBERTO INSURANCE	1,000
7171	ETHNOTRICITY DANCE STUDIO	1,500
7173	NEW-HEART HEALTH CARE	1,500
7175	PHYSICAL REHABILITATION	3,000
7179	HAIR SALON	1,500
7181	DINO'S HAIR TREATMENT	1,300
7183	CARIBBEAN RESTAURANT	2,600
7187	OPTOMETRIST - DR. MAYER	1,300
7189	KOREAN COMMUNITY CENTER	1,100

SUITE	TENANT	SIZE (SF)
7191	VITAL FOR LIFE	1,100
7193	DENTIST	1,100
7195	CHIROPRACTOR	1,350
7199	ALLSTATE INSURANCE	1,350
7203	TAX ONCALL	750
7205	AVAILABLE	750
7207	AVAILABLE	750
7209	TRAFFIC SCHOOL	750
7217	DMV	3,825
7215	ACE INSURANCE	1,200
7213	UNGER & KOWITT TRAFFIC LAW	1,500

DEMOGRAPHICS			
MILES	1 MI	3 MI	5 MI
POPULATION	25,203	202,873	432,792
HOUSEHOLDS	10,152	81,570	167,986
AVG HH INCOME	\$47,985	\$52,980	\$60,857
BUSINESSES	859	7,692	18,759
EMPLOYEES	6,060	73,998	180,556



FOR MORE INFORMATION

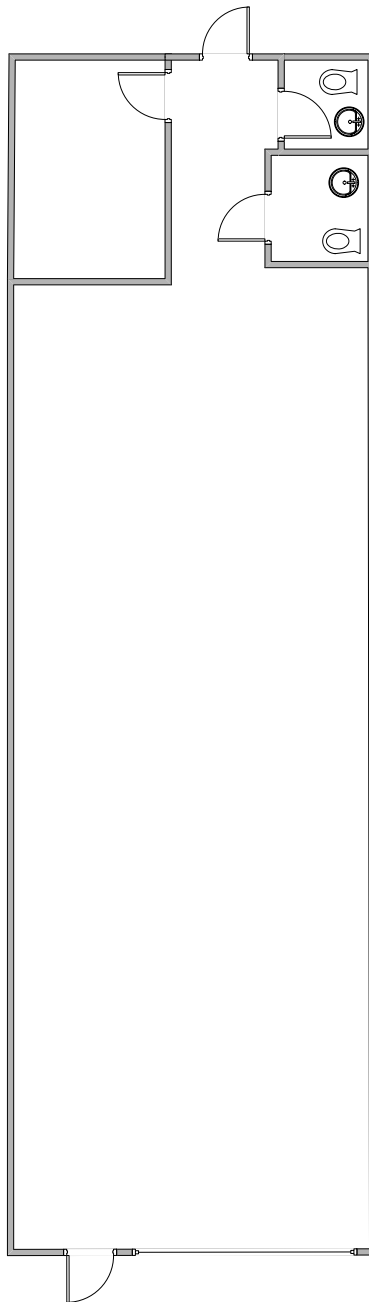
JOSE E. FLEFIL | ASSOCIATE

MORNING CALM
ADVISORS

CELL: (561) 402.3192 | JFLEFIL@MORNING-CALM.COM

OAKBROOK PLAZA

SUITE 7165 | 1,300 SQ.FT.



MORNING CALM
ADVISORS

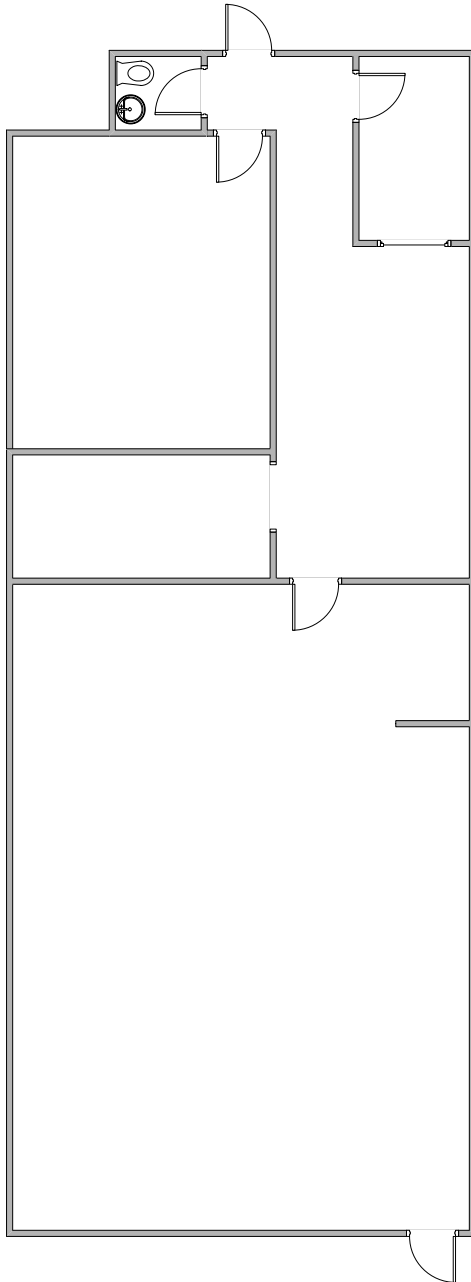
FOR MORE INFORMATION

JOSE E. FLEFIL | ASSOCIATE

CELL: (561) 402.3192 | JFLEFIL@MORNING-CALM.COM

OAKBROOK PLAZA

SUITE 7167 | 1,700 SQ.FT.



MORNING CALM
ADVISORS

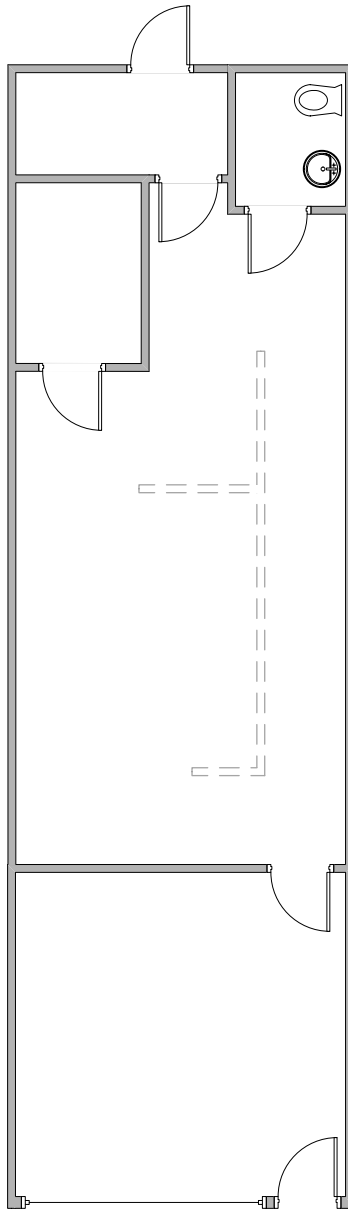
FOR MORE INFORMATION

JOSE E. FLEFIL | ASSOCIATE

CELL: (561) 402.3192 | JFLEFIL@MORNING-CALM.COM

OAKBROOK PLAZA

SUITE 7205 | 750 SQ.FT.



MORNING CALM
ADVISORS

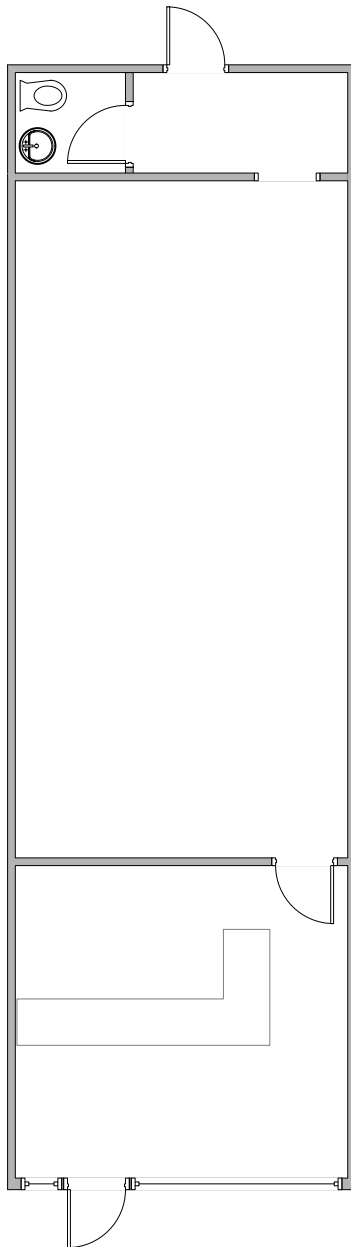
FOR MORE INFORMATION

JOSE E. FLEFIL | ASSOCIATE

CELL: (561) 402.3192 | JFLEFIL@MORNING-CALM.COM

OAKBROOK PLAZA

SUITE 7207 | 750 SQ.FT.



MORNING CALM
ADVISORS

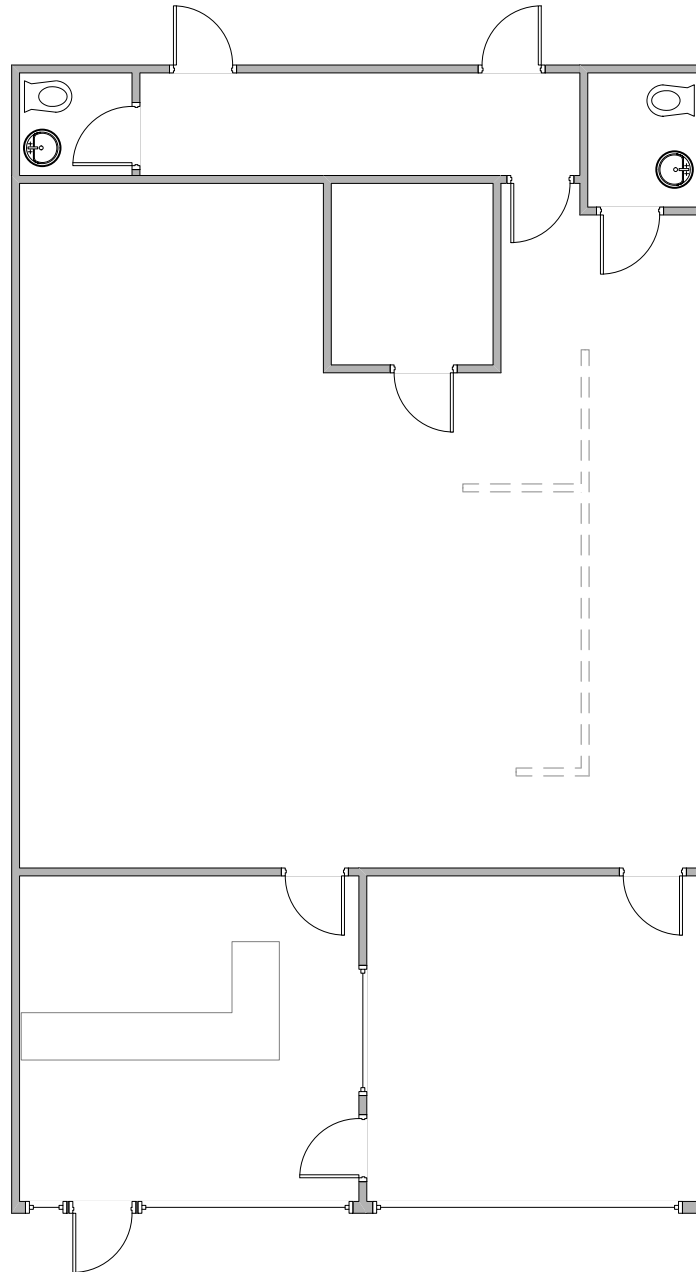
FOR MORE INFORMATION

JOSE E. FLEFIL | ASSOCIATE

CELL: (561) 402.3192 | JFLEFIL@MORNING-CALM.COM

OAKBROOK PLAZA

SUITE 7205-7207 | 1,500 SQ.FT.



MORNING CALM
ADVISORS

FOR MORE INFORMATION

JOSE E. FLEFIL | ASSOCIATE

CELL: (561) 402.3192 | JFLEFIL@MORNING-CALM.COM